

SEPTEMBER-FEBRUARY CALENDAR-2024-25

SEPTEMBER



3RD - CLASSES BEGIN FOR THE FALL SEASON!

7TH - "WILLY WONKA" REHEARSALS BEGIN!
(AGES 7-17)

14TH - "THE ADDAMS FAMILY" REHEARSALS BEGIN!
(AGES 12-17)

22ND - AUDITIONS "THE NUTCRACKER"

AGES 4-6 AND AGES 7+
FOR YOUNG DANCERS AND THEATRICAL
PARTS REGISTER ONLINE UNDER
"ADVANCED PROGRAM"!



23RD - OCTOBER 6TH

*** BRING A FRIEND WEEK!**

INVITE A FRIEND TO WATCH OR
PARTICIPATE IN YOUR CLASS! THE CLASS
WITH THE MOST FRIENDS WILL WIN A PIZZA
PARTY! TO PARTICIPATE, FILL OUT THE BRING
A FRIEND FORM ONLINE UNDER THE
TICKETS/EVENTS DROP-DOWN MENU
(SCROLL TO BOTTOM OF PAGE) OR SIGN UP
FRIENDS THROUGH YOUR PORTAL.



OCTOBER

1ST - PERFECT ATTENDANCE BEGINS

DANCE STUDENTS WHO HAVE A PERFECT SCORE C
ATTENDANCE WILL RECEIVE A REWARD AND
RECOGNITION AT OUR JUNE RECITAL



24TH - 30TH

*** WEAR YOUR HALLOWEEN COSTUME TO CLASS!**

31ST - CLOSED FOR HALLOWEEN!
BE SAFE AND HAVE FUN!



NOVEMBER

15TH - COSTUME FEES ARE CHARGED

REMINDER: YOUR PAPERWORK WILL GIVE YOU
THE DEADLINE TO OPT OUT BEFORE FEES ARE CHARGED.

8TH - 9TH PRODUCTION: "WILLY WONKA"
TICKETS ONLINE!



15TH - 16TH PRODUCTION: "THE ADDAMS FAMILY"
TICKETS ONLINE!

27TH - DECEMBER 1ST * WEDNESDAY-SUNDAY
CLOSED FOR THANKSGIVING!
HAPPY THANKSGIVING!



SNOW CLOSINGS

VISIT WEBSITE AT WWW.COMAD.NET
HOME PAGE

DECEMBER

2ND - CLASSES BEGIN FOR THE WINTER SEASON!

7TH - 8TH MUSIC AND THEATRE

*** HOLIDAY RECITAL**

REMINDER THAT YOUR PAPERWORK WILL
GIVE YOU THE DEADLINE TO OPT OUT
BEFORE FEES ARE CHARGED

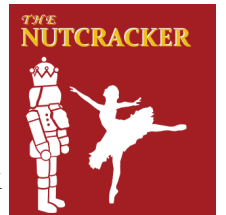


14TH - 15TH * PRODUCTION: "THE NUTCRACKER"
TICKETS ONLINE!

TBD * MALL PERFORMANCE

22ND - JANUARY 1ST * SUNDAY-WEDNESDAY

*** CLOSED FOR WINTER BREAK**



HAPPY NEW YEAR!



JANUARY

2ND - CLASSES BACK IN SESSION

4TH - PRODUCTION REHEARSALS
BEGIN! (AGES 7-17)

11TH - PRODUCTION REHEARSALS
BEGIN! (AGES 12-17)

20TH - 26TH

*** BRING A FRIEND WEEK!**

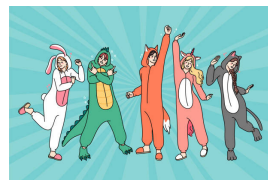
INVITE A FRIEND TO WATCH OR
PARTICIPATE IN YOUR CLASS! THE CLASS
WITH THE MOST FRIENDS WILL WIN A PIZZA
PARTY! TO PARTICIPATE, FILL OUT THE BRING
A FRIEND FORM ONLINE UNDER THE
TICKETS/EVENTS DROP-DOWN MENU
(SCROLL TO BOTTOM OF PAGE) OR SIGN UP
FRIENDS THROUGH YOUR PORTAL.



27TH - FEBRUARY 2ND

*** PAJAMA WEEK!**

WEAR YOUR PAJAMAS TO CLASS!



FEBRUARY

*** PICTURE MONTH**

TEACHERS WILL BE TAKING PICTURES OF THEIR
CLASSES THROUGHOUT THE MONTH. CLASS WITH THE
MOST CREATIVE PHOTO WINS A PIZZA PARTY! JUDGED
IN MARCH.



10TH - 16TH VALENTINE'S WEEK!

WEAR RED AND/OR PINK
TO YOUR CLASS!

*** CALENDAR TO BE UPDATED FOR JANUARY-AUGUST**

